

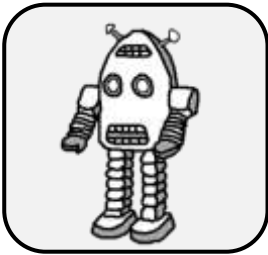


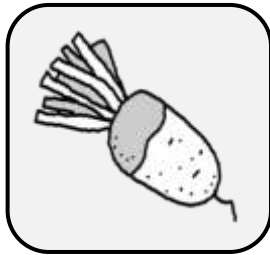
LECTURE

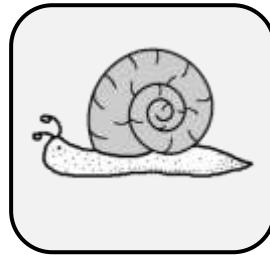
Assemblage syllabique

[r]

1. Coche la case qui correspond à la syllabe où tu entends [r].



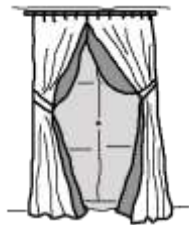






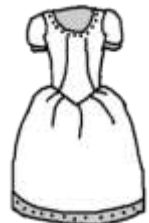
2. Ecris la syllabe que tu entends au début de chaque mot : ra ra re ri.











3. Complète avec les syllabes ra re ri ro.

ra

re

ri

ro



pa _ _ chute



camé _ _



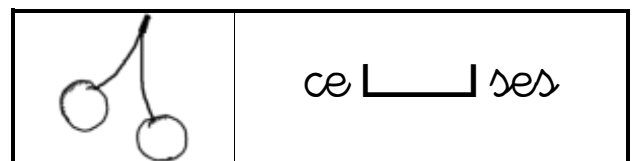
baignoi _ _



cafetiè _ _



ca _ _ tte



ce _ _ ses